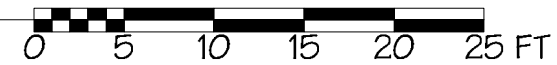


SECOND FLOOR PLAN
Scale: 3/32" = 1'-0"



COTS NORTH AVENUE

BURLINGTON, VERMONT

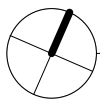
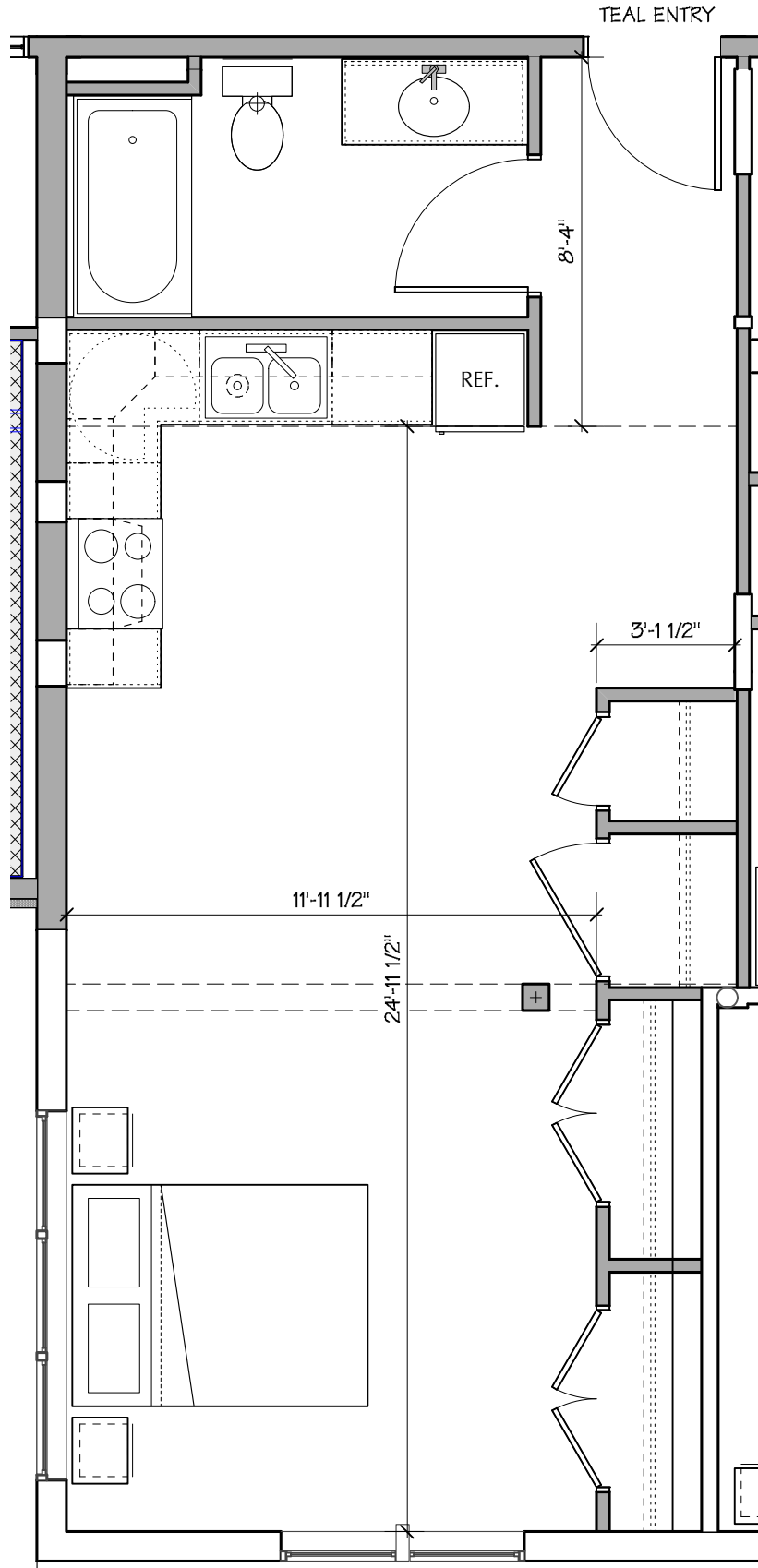
COPYRIGHT © 2015. ALL RIGHTS RESERVED.
DUNCAN • WISNIEWSKI ARCHITECTURE
A Professional Corporation

**Duncan
Wisniewski** ARCHITECTURE

DATE: 01.11.2017

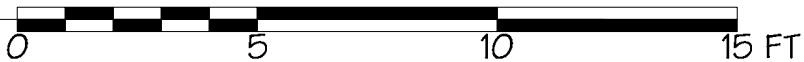
255 SOUTH CHAMPLAIN STREET
BURLINGTON, VERMONT 05401
T: 802.864.6693

APTS



APARTMENT 201 PLAN

Scale: 1/4" = 1'-0" 493 SF



COTS NORTH AVENUE

BURLINGTON, VERMONT

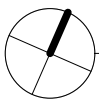
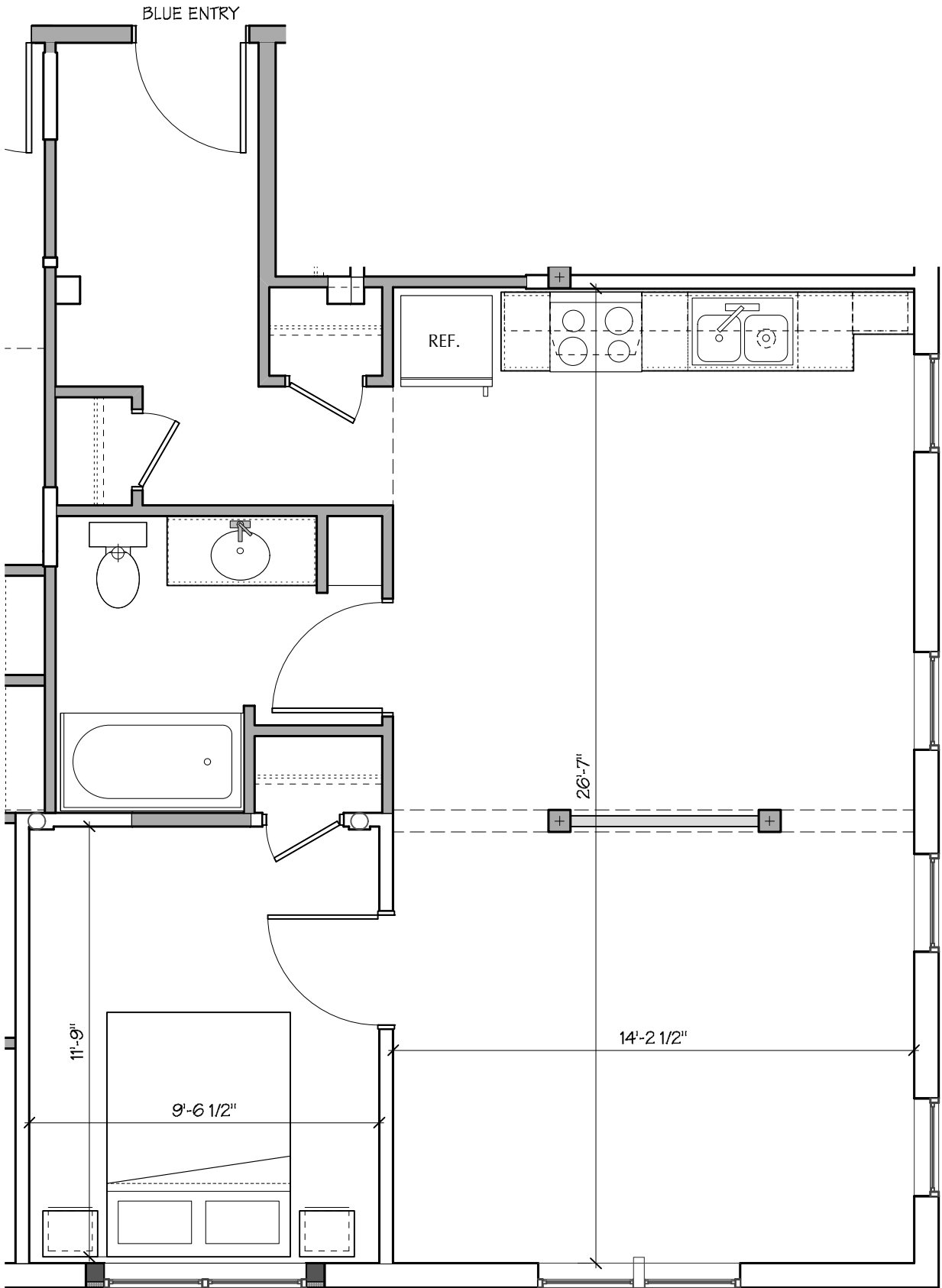
**Duncan
Wisniewski** 
ARCHITECTURE

DATE: 01.11.2017

COPYRIGHT © 2016 ALL RIGHTS RESERVED
DUNCAN • WISNIEWSKI ARCHITECTURE
A Professional Corporation

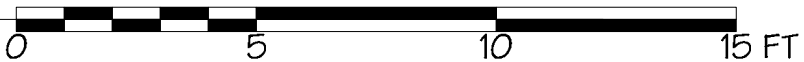
255 SOUTH CHAMPLAIN STREET
BURLINGTON, VERMONT 05401
T: 802.864.6693

201



APARTMENT 202 PLAN

Scale: 1/4" = 1'-0" 668 SF



COTS NORTH AVENUE

BURLINGTON, VERMONT

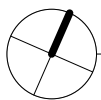
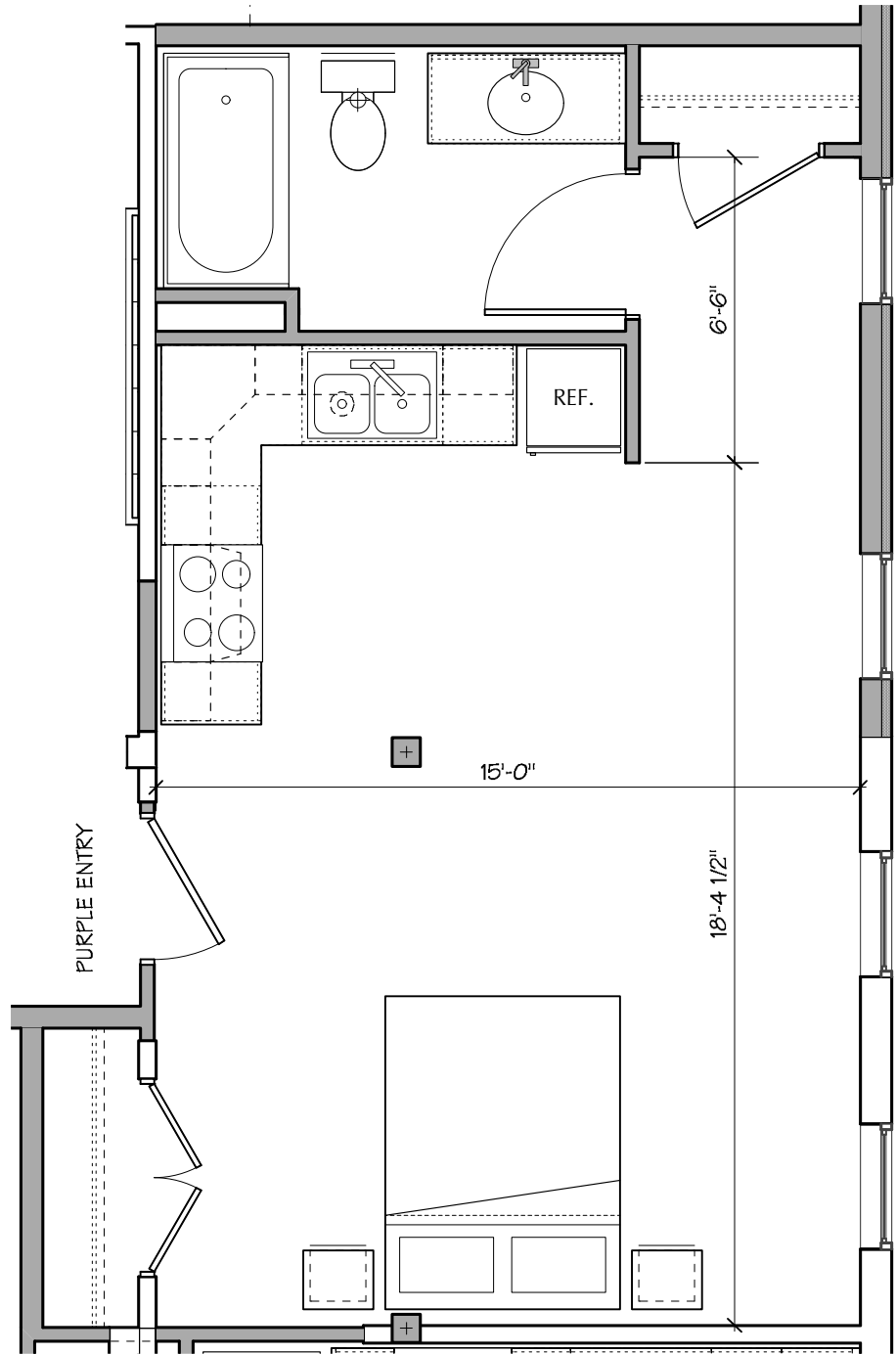
**Duncan
Wisniewski** 
ARCHITECTURE

DATE: 01.11.2017

COPYRIGHT © 2016 ALL RIGHTS RESERVED
DUNCAN • WISNIEWSKI ARCHITECTURE
A Professional Corporation

255 SOUTH CHAMPLAIN STREET
BURLINGTON, VERMONT 05401
T: 802.864.6693

202



APARTMENT 203 PLAN

Scale: 1/4" = 1'-0" 424 SF



COTS NORTH AVENUE
BURLINGTON, VERMONT

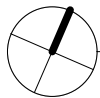
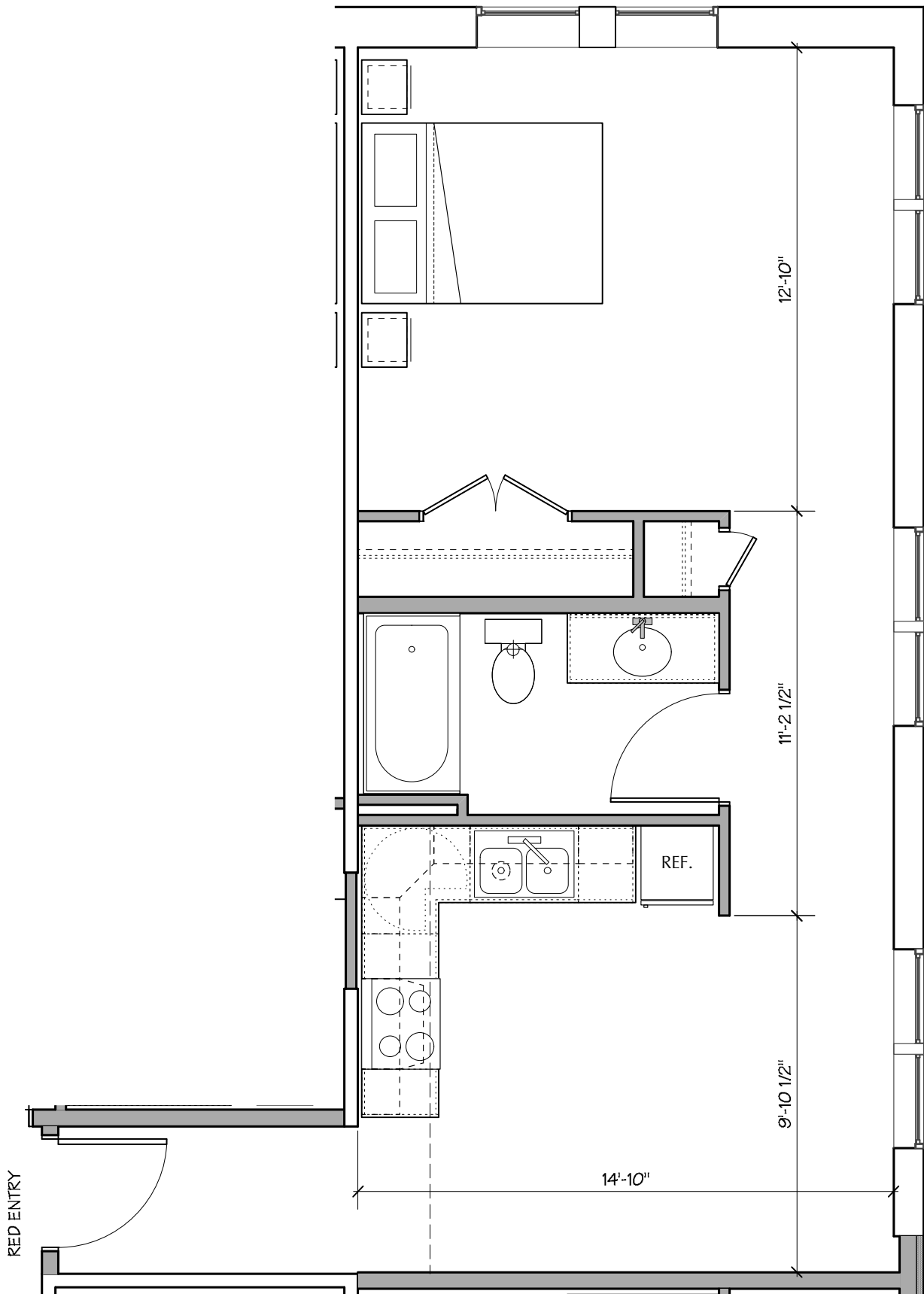
Duncan
Wisniewski 
ARCHITECTURE

DATE: 01.11.2017

COPYRIGHT © 2016 ALL RIGHTS RESERVED
DUNCAN • WISNIEWSKI ARCHITECTURE
A Professional Corporation

255 SOUTH CHAMPLAIN STREET
BURLINGTON, VERMONT 05401
T: 802.864.6693

203



APARTMENT 204 PLAN

Scale: 1/4" = 1'-0" 537 SF



COTS NORTH AVENUE

BURLINGTON, VERMONT

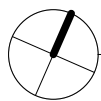
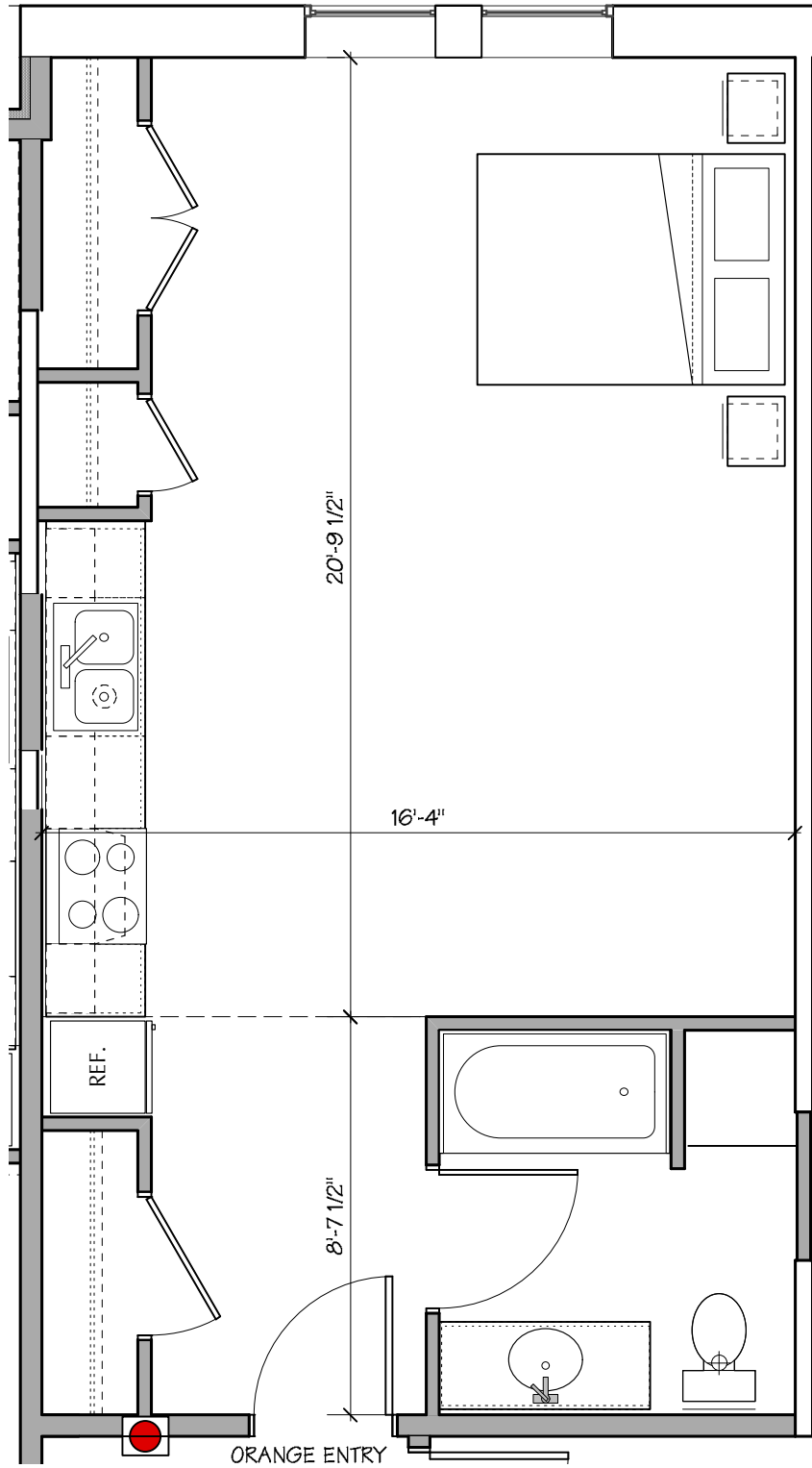
**Duncan
Wisniewski** 
ARCHITECTURE

DATE: 01.11.2017

COPYRIGHT © 2016 ALL RIGHTS RESERVED
DUNCAN • WISNIEWSKI ARCHITECTURE
A Professional Corporation

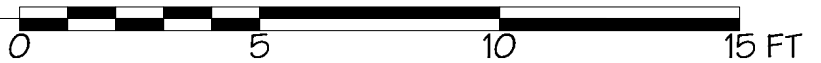
255 SOUTH CHAMPLAIN STREET
BURLINGTON, VERMONT 05401
T: 802.864.6693

204



APARTMENT 205 PLAN

Scale: 1/4" = 1'-0" 480 SF



COTS NORTH AVENUE
BURLINGTON, VERMONT

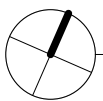
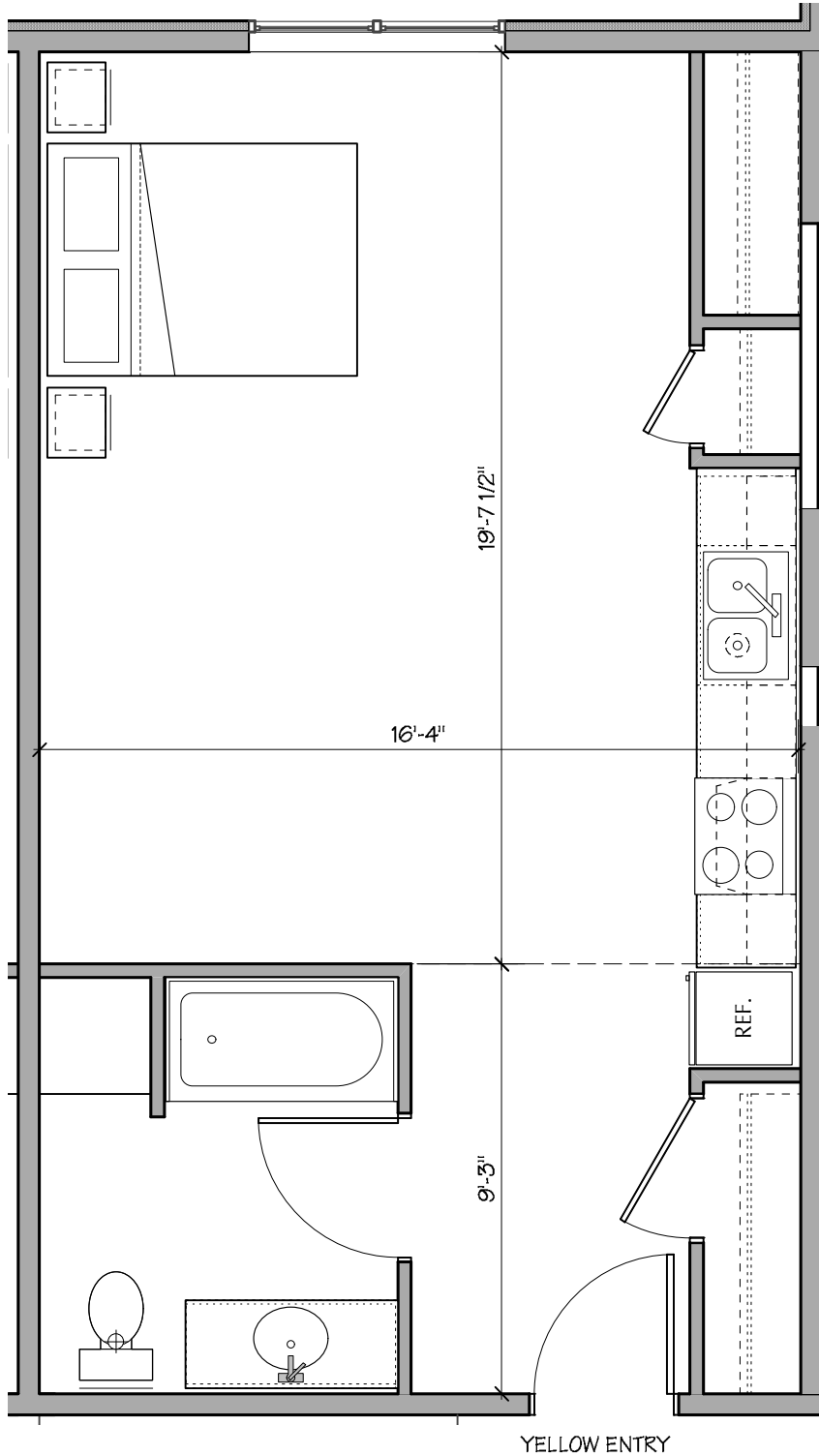
Duncan
Wisniewski 
ARCHITECTURE

DATE: 01.11.2017

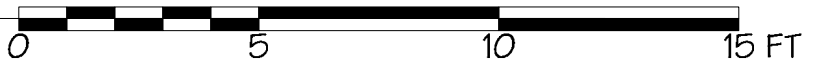
COPYRIGHT © 2016 ALL RIGHTS RESERVED
DUNCAN • WISNIEWSKI ARCHITECTURE
A Professional Corporation

255 SOUTH CHAMPLAIN STREET
BURLINGTON, VERMONT 05401
T: 802.864.6693

205



APARTMENT 206 PLAN
 Scale: 1/4" = 1'-0" 472 SF



COTS NORTH AVENUE
 BURLINGTON, VERMONT

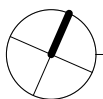
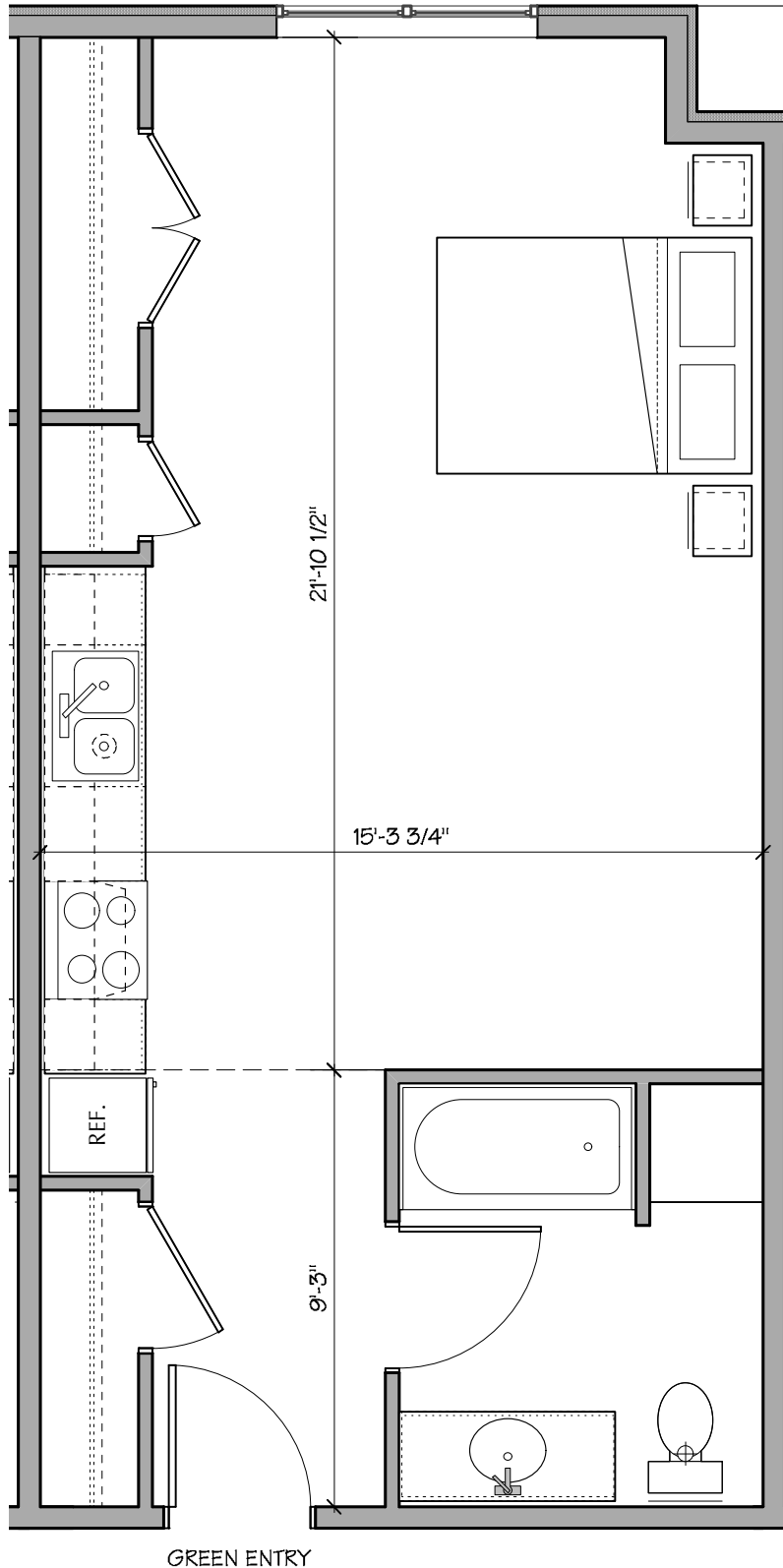
Duncan
 Wisniewski ARCHITECTURE

DATE: 01.11.2017

COPYRIGHT © 2016 ALL RIGHTS RESERVED
 DUNCAN • WISNIEWSKI ARCHITECTURE
 A Professional Corporation

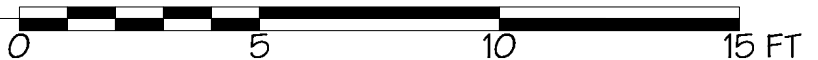
255 SOUTH CHAMPLAIN STREET
 BURLINGTON, VERMONT 05401
 T: 802.864.6693

206



APARTMENT 207 PLAN

Scale: 1/4" = 1'-0" 472 SF



COTS NORTH AVENUE
BURLINGTON, VERMONT

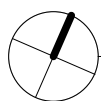
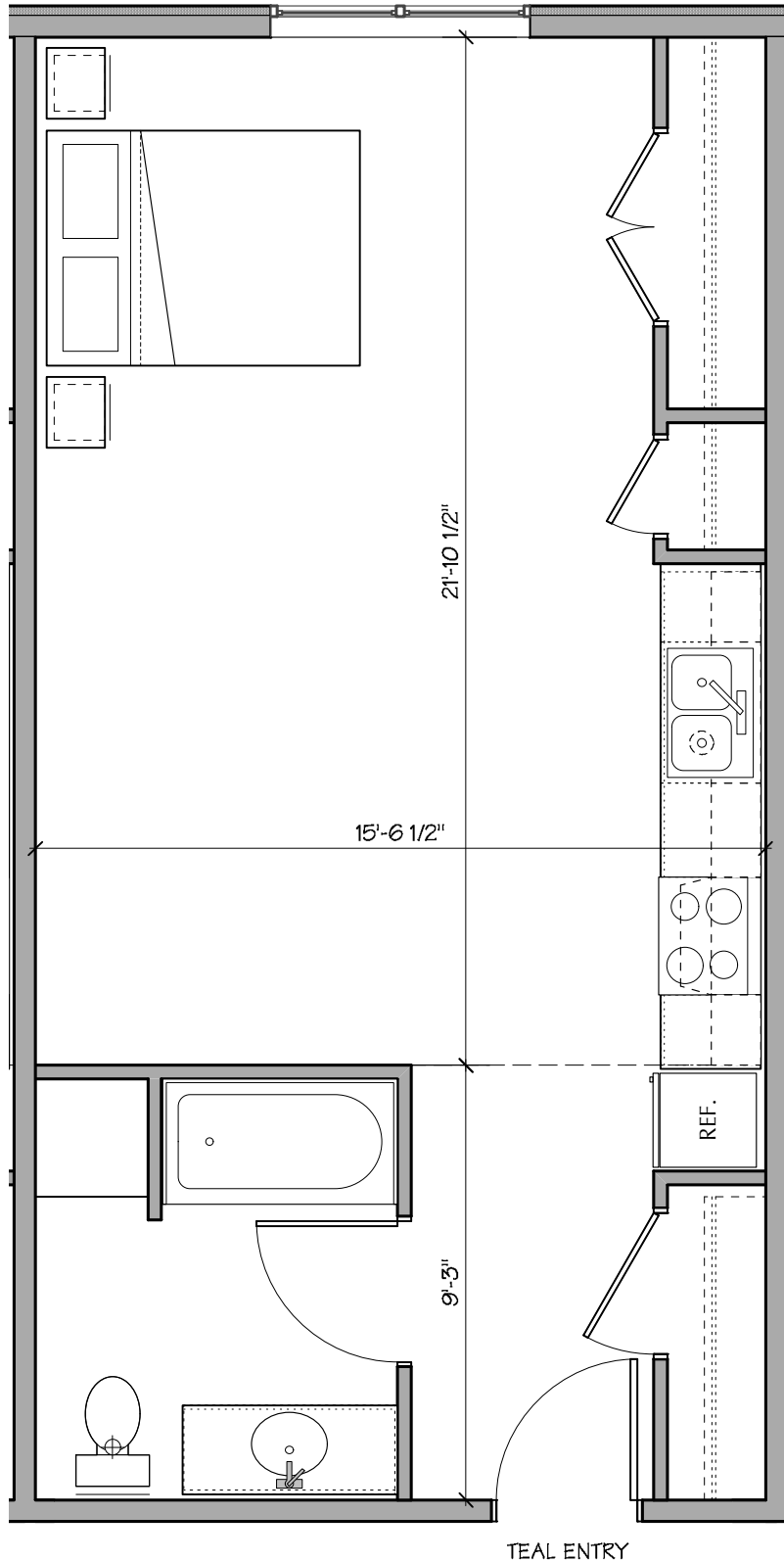
Duncan
Wisniewski 
ARCHITECTURE

DATE: 01.11.2017

COPYRIGHT © 2016 ALL RIGHTS RESERVED
DUNCAN • WISNIEWSKI ARCHITECTURE
A Professional Corporation

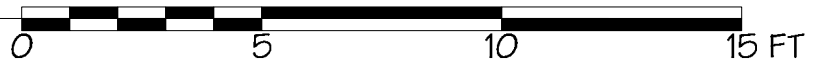
255 SOUTH CHAMPLAIN STREET
BURLINGTON, VERMONT 05401
T: 802.864.6693

207



APARTMENT 208 PLAN

Scale: 1/4" = 1'-0" 483 SF



COTS NORTH AVENUE
BURLINGTON, VERMONT

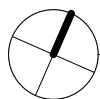
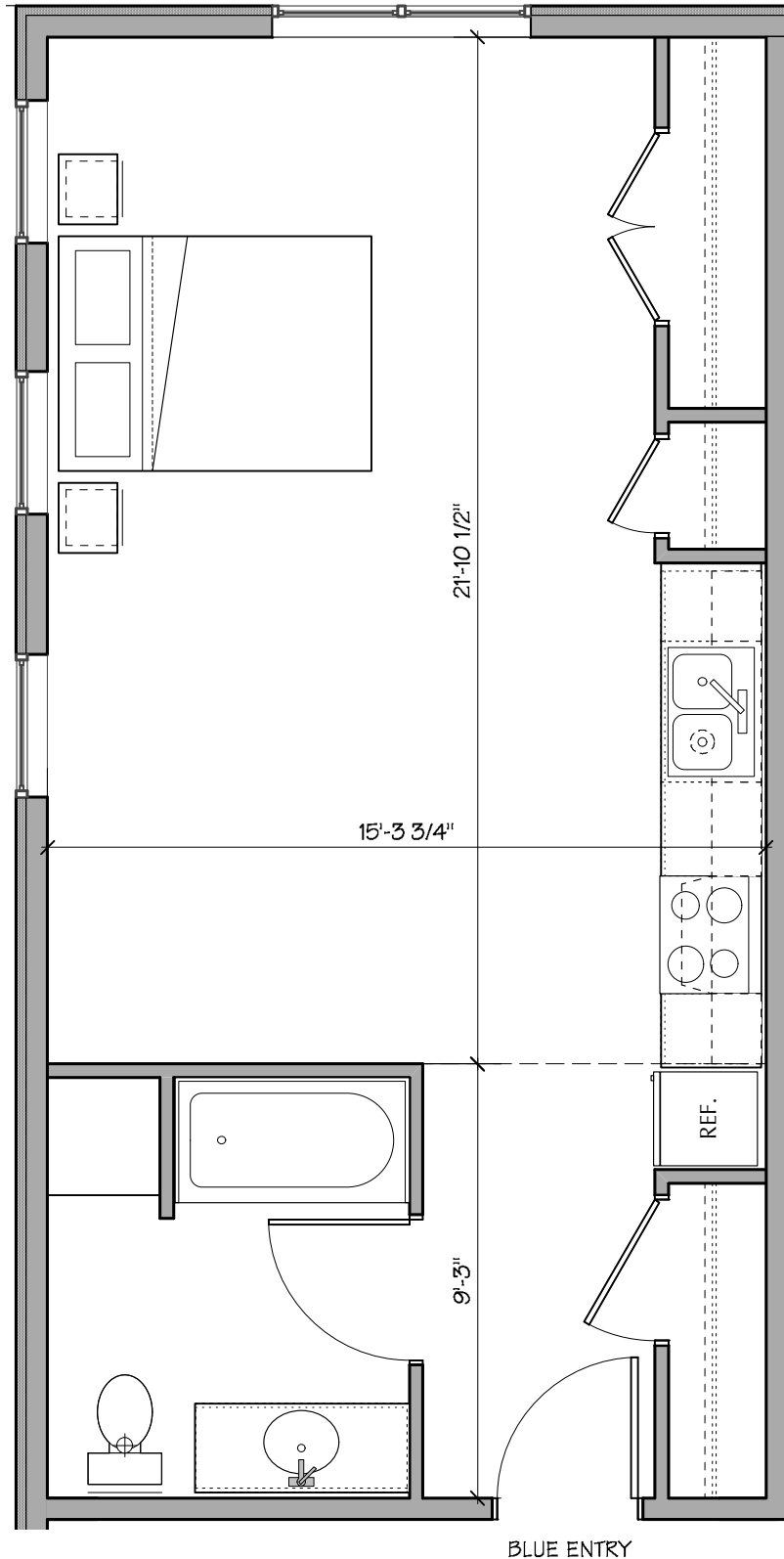
Duncan
Wisniewski 
ARCHITECTURE

DATE: 01.11.2017

COPYRIGHT © 2016 ALL RIGHTS RESERVED
DUNCAN • WISNIEWSKI ARCHITECTURE
A Professional Corporation

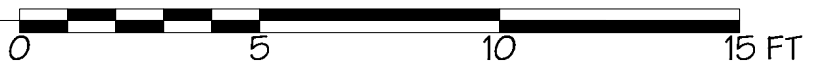
255 SOUTH CHAMPLAIN STREET
BURLINGTON, VERMONT 05401
T: 802.864.6693

208



APARTMENT 209 PLAN

Scale: 1/4" = 1'-0" 476 SF



BLUE ENTRY

COTS NORTH AVENUE

BURLINGTON, VERMONT

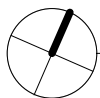
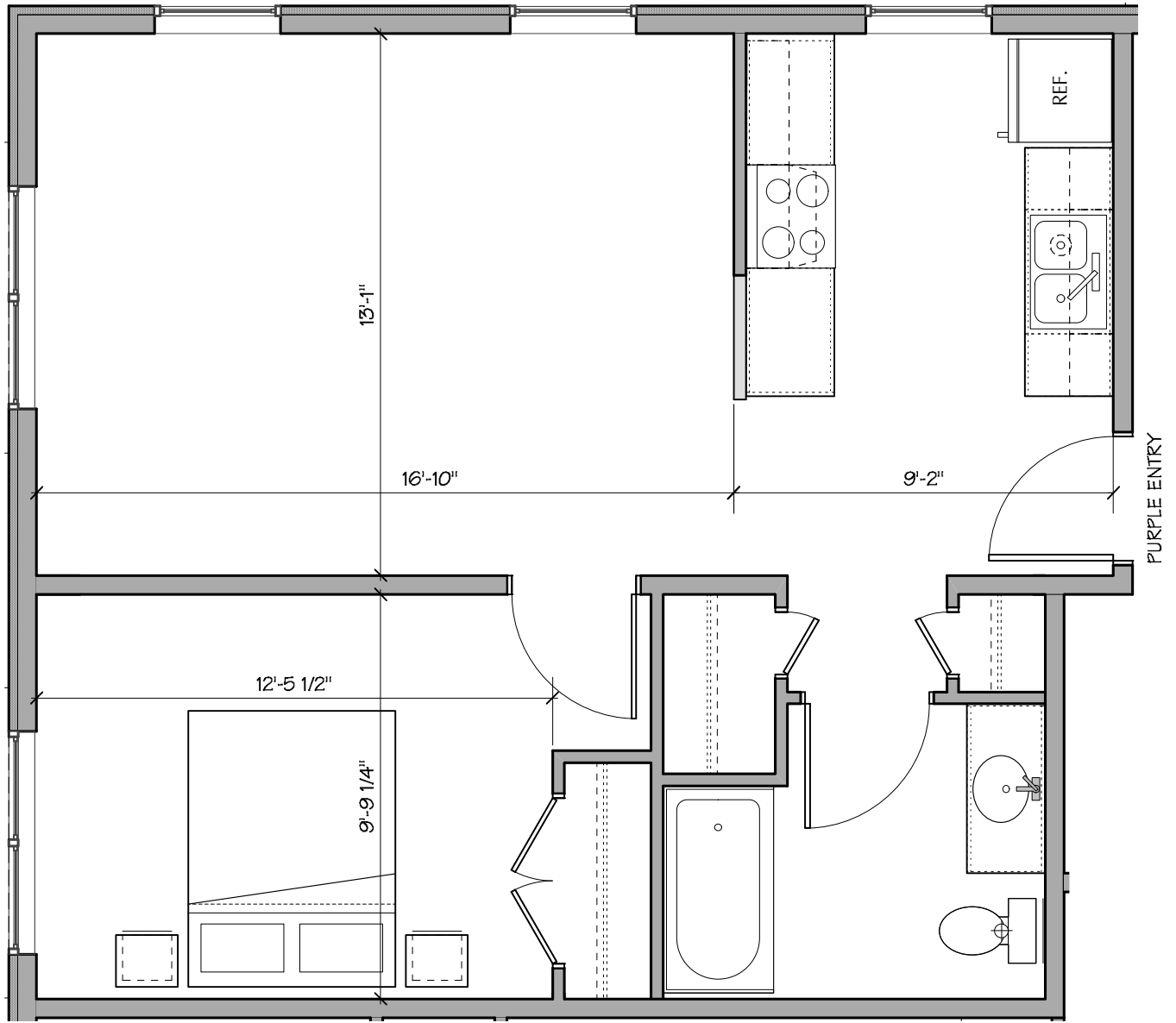
Duncan
Wisniewski
ARCHITECTURE

DATE: 01.11.2017

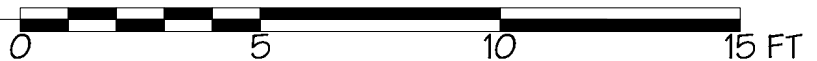
COPYRIGHT © 2016 ALL RIGHTS RESERVED
DUNCAN • WISNIEWSKI ARCHITECTURE
A Professional Corporation

255 SOUTH CHAMPLAIN STREET
BURLINGTON, VERMONT 05401
T: 802.864.6693

209



APARTMENT 210 PLAN
 Scale: 1/4" = 1'-0" 589 SF



COTS NORTH AVENUE

BURLINGTON, VERMONT

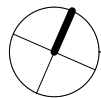
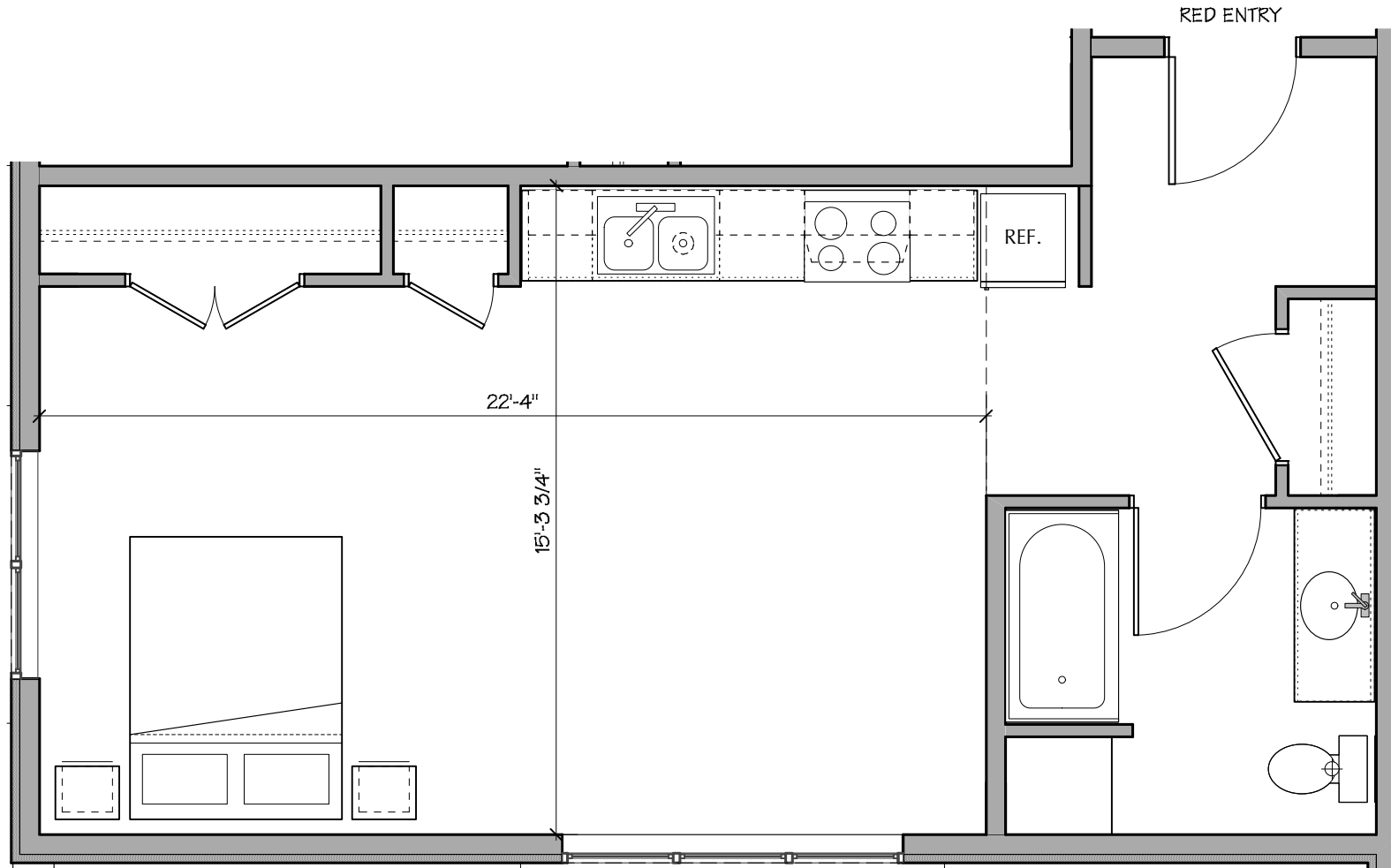
Duncan
 Wisniewski 
 ARCHITECTURE

DATE: 01.11.2017

COPYRIGHT © 2016 ALL RIGHTS RESERVED
 DUNCAN • WISNIEWSKI ARCHITECTURE
 A Professional Corporation

255 SOUTH CHAMPLAIN STREET
 BURLINGTON, VERMONT 05401
 T: 802.864.6693

210



APARTMENT 211 PLAN

Scale: 1/4" = 1'-0" 503 SF



COTS NORTH AVENUE

BURLINGTON, VERMONT

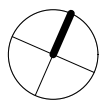
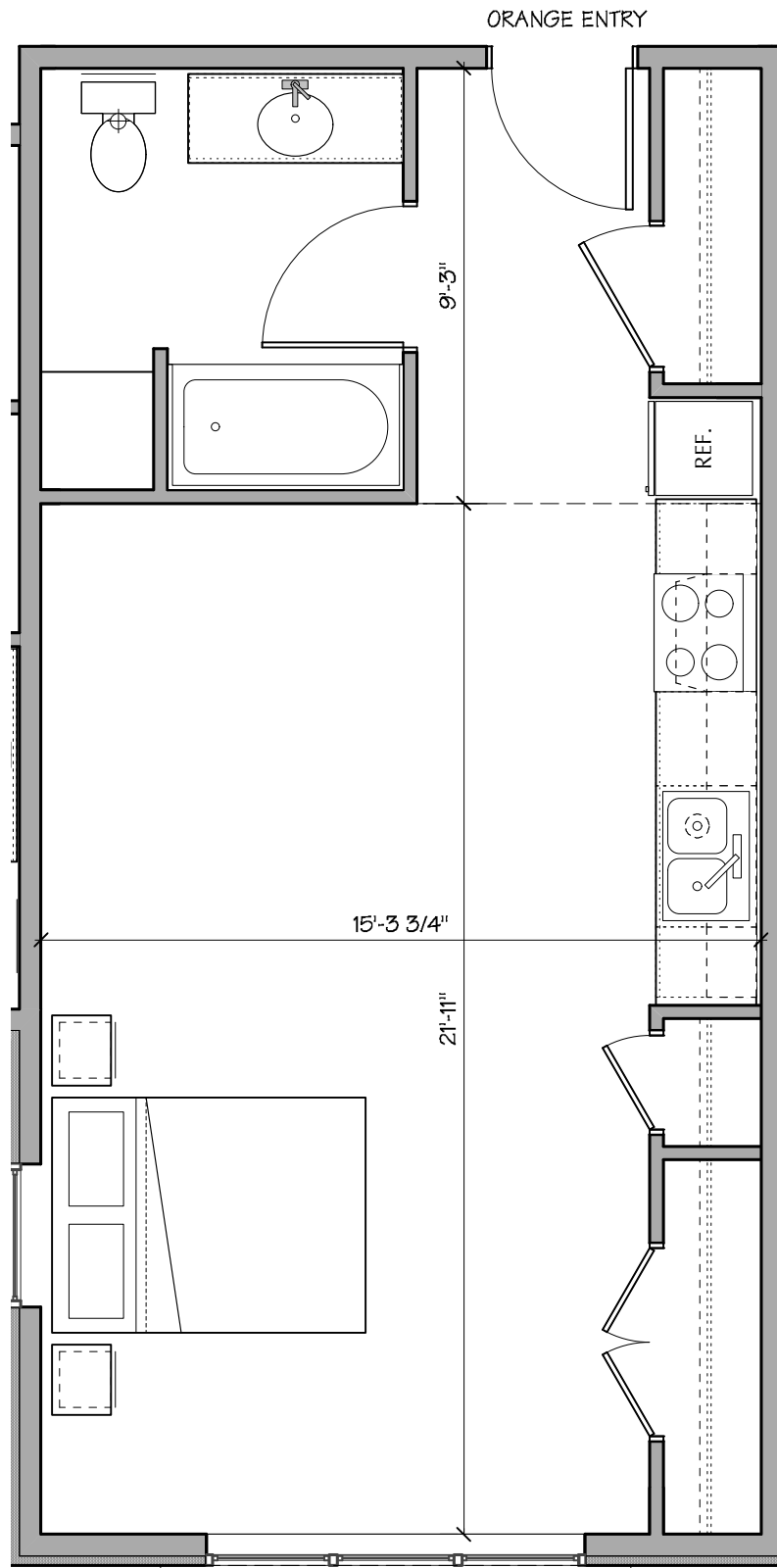
Duncan
Wisniewski 
ARCHITECTURE

DATE: 01.11.2017

255 SOUTH CHAMPLAIN STREET
BURLINGTON, VERMONT 05401
T: 802.864.6693

211

COPYRIGHT © 2016. ALL RIGHTS RESERVED
DUNCAN • WISNIEWSKI ARCHITECTURE
A Professional Corporation



APARTMENT 212 PLAN

Scale: 1/4" = 1'-0" 477 SF



COTS NORTH AVENUE
BURLINGTON, VERMONT

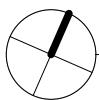
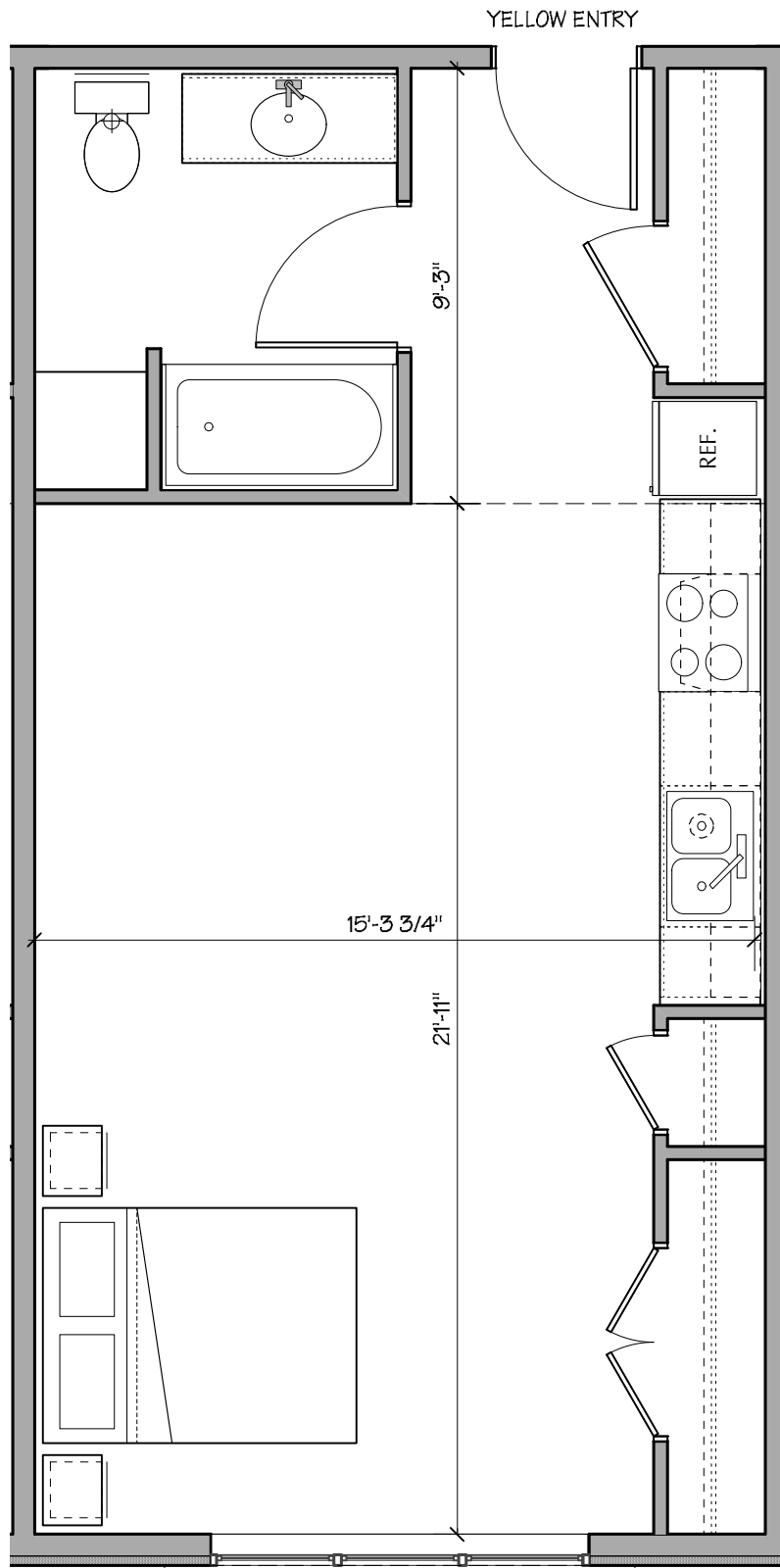
Duncan
Wisniewski ARCHITECTURE

DATE: 01.11.2017

255 SOUTH CHAMPLAIN STREET
BURLINGTON, VERMONT 05401
T: 802.864.6693

212

COPYRIGHT © 2016 ALL RIGHTS RESERVED
DUNCAN • WISNIEWSKI ARCHITECTURE
A Professional Corporation



APARTMENT 213 PLAN

Scale: 1/4" = 1'-0" 484 SF

*AUDIO / VISUAL UNIT



COTS NORTH AVENUE

BURLINGTON, VERMONT

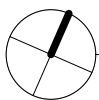
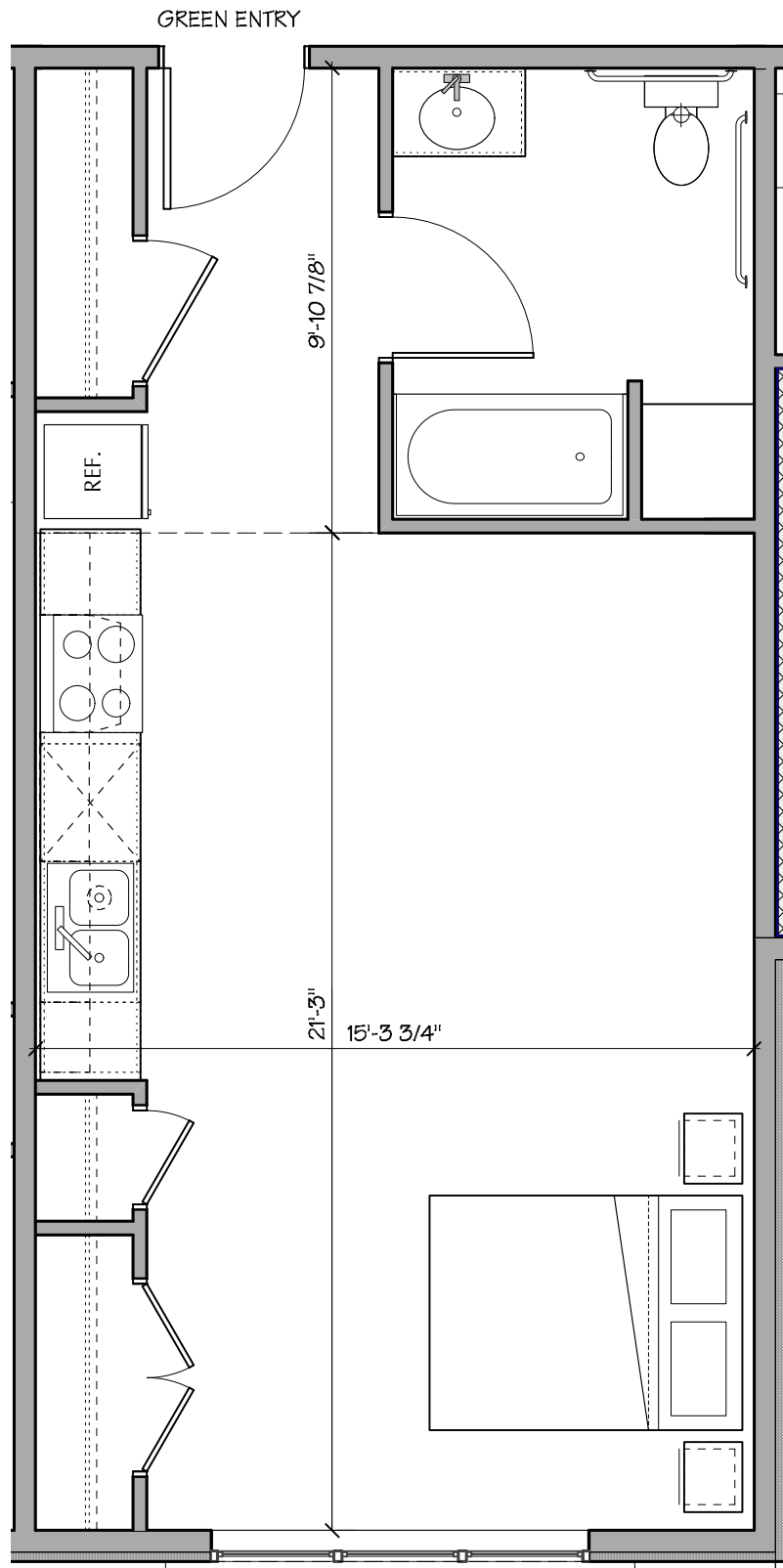
**Duncan
Wisniewski** 
ARCHITECTURE

DATE: 01.11.2017

COPYRIGHT © 2016 ALL RIGHTS RESERVED
DUNCAN • WISNIEWSKI ARCHITECTURE
A Professional Corporation

255 SOUTH CHAMPLAIN STREET
BURLINGTON, VERMONT 05401
T: 802.864.6693

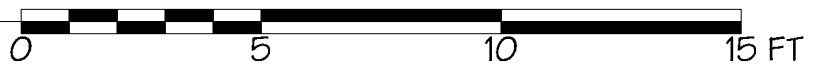
213



APARTMENT 214 PLAN

Scale: 1/4" = 1'-0" 477 SF

*ADA ACCESSIBLE UNIT



COTS NORTH AVENUE

BURLINGTON, VERMONT

Duncan
Wisniewski 
ARCHITECTURE

DATE: 01.11.2017

COPYRIGHT © 2016 ALL RIGHTS RESERVED
DUNCAN • WISNIEWSKI ARCHITECTURE
A Professional Corporation

255 SOUTH CHAMPLAIN STREET
BURLINGTON, VERMONT 05401
T: 802.864.6693

214